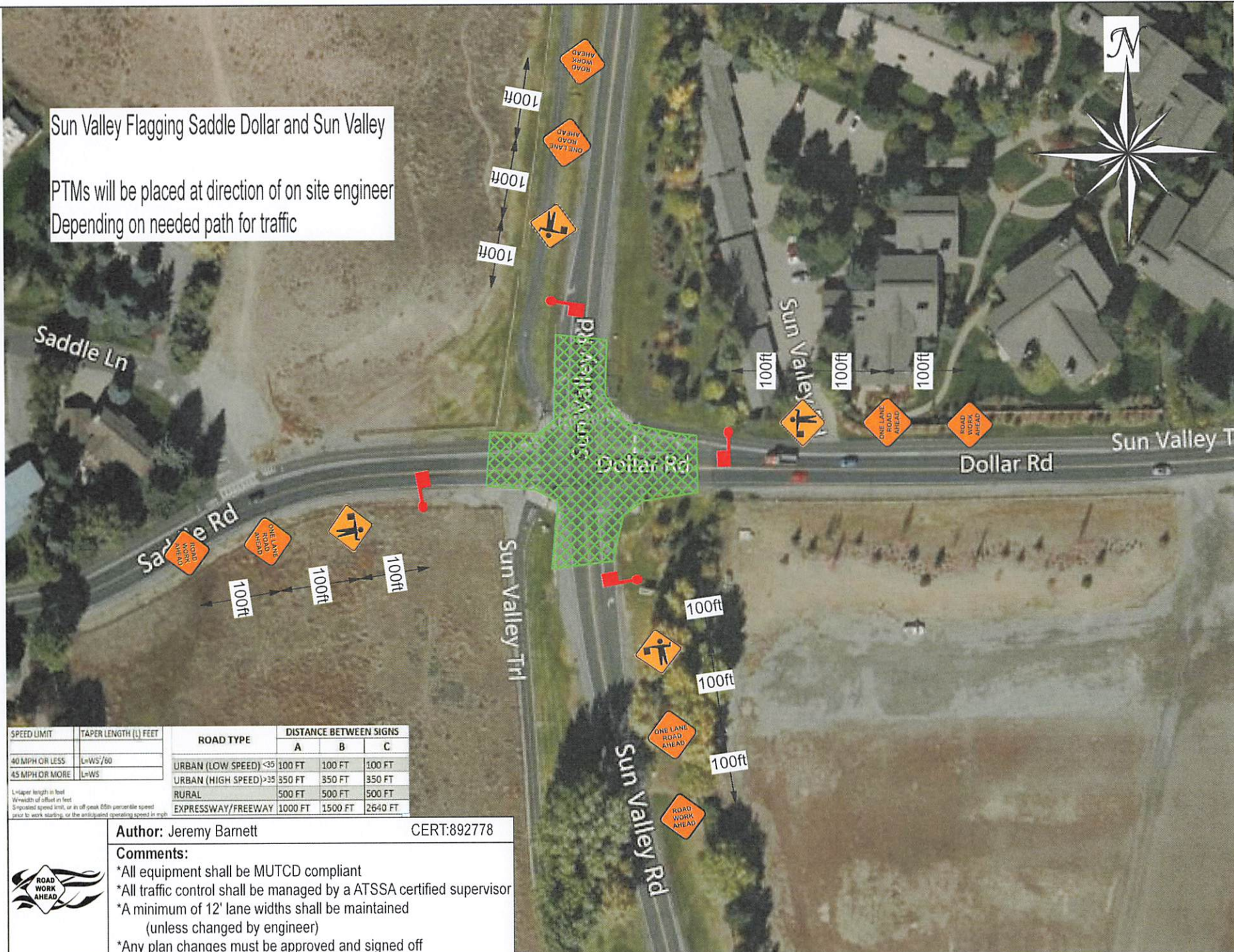


Sun Valley Flagging Saddle Dollar and Sun Valley

PTMs will be placed at direction of on site engineer
Depending on needed path for traffic



SPEED LIMIT	TAPER LENGTH (L) FEET	ROAD TYPE	DISTANCE BETWEEN SIGNS		
			A	B	C
40 MPH OR LESS	L=WS/60	URBAN (LOW SPEED) <35	100 FT	100 FT	100 FT
45 MPH OR MORE	L=WS	URBAN (HIGH SPEED) >35	350 FT	350 FT	350 FT
		RURAL	500 FT	500 FT	500 FT
		EXPRESSWAY/FREEWAY	1000 FT	1500 FT	2640 FT

L=taper length in feet
W=width of offset in feet
S=suggested speed limit, or in off-peak 85th percentile speed
prior to work starting, or the anticipated operating speed in mph

Author: Jeremy Barnett CERT:892778

- Comments:**
- *All equipment shall be MUTCD compliant
 - *All traffic control shall be managed by a ATSSA certified supervisor
 - *A minimum of 12' lane widths shall be maintained (unless changed by engineer)
 - *Any plan changes must be approved and signed off

